

# I-Beam Festoon Systems Application Data Form



The following data form must be filled out in order for the system to be designed and perform properly.

Request Date

Sales Person

Company

Contact

Title

Tel

Fax

Company Type

E-mail

## System Parameters

Crane Type: \_\_\_\_\_ Crane Class: \_\_\_\_\_

Travel Speed: \_\_\_\_\_ Acceleration: \_\_\_\_\_

Duty Cycle: \_\_\_\_\_

Does your application require Data Transmission as well as Power Transmission?  Yes  No

If yes, describe your requirements:

## Environment

Indoor  Outdoor

Ambient Temperature Range Minimum: \_\_\_\_\_ Maximum: \_\_\_\_\_  °F  °C

Humidity: \_\_\_\_\_%

Corrosives what type (salt, chlorine, steam, acids, etc.) \_\_\_\_\_

Hazardous Location explain: \_\_\_\_\_

Class: \_\_\_\_\_ Division: \_\_\_\_\_ Group: \_\_\_\_\_

## Options

Factory Pre-Assembly  Cable Cord Grips

## System Dimensions

Tow Trolley or  Tow Clamp Measurements in:  ft  M

Active Travel: \_\_\_\_\_

Loop Depth: \_\_\_\_\_

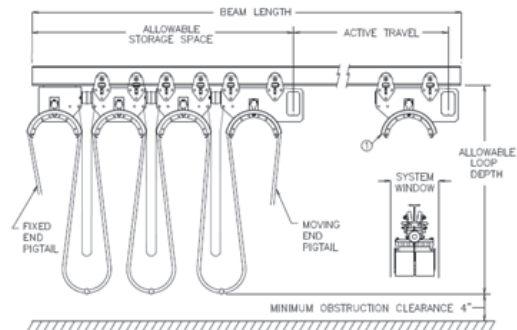
Storage Space: \_\_\_\_\_

System Window: \_\_\_\_\_

Fixed end Pigtail: \_\_\_\_\_

Mobile End Pigtail: \_\_\_\_\_

I-Beam Size: \_\_\_\_\_



# I-Beam Festoon Systems Application Data Form



The following data form must be filled out in order for the system to be designed and perform properly.

### Festoon Cables

Cable Type:  Flat  Round  Combination      Cable Jacket:  Neoprene  PVC

Item	Quantity	Cable type / Description	AWG	Conductors	Dimensions: (In.)	Weight: (lb/ft)
1						
2						
3						
4						
5						
6						
7						
8						
9						
10						
11						
12						
13						
14						
15						